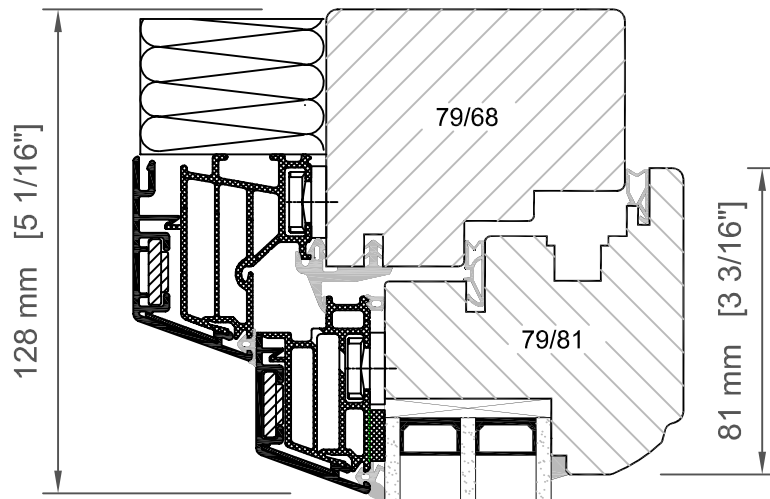


# MIRA Therm



US values:  
 $U_w = 0,14 \text{ Btu/h}^\circ\text{Fft}^2$   
 $U_g = 0,11 \text{ Btu/h}^\circ\text{Fft}^2$

$U_w = 0,11 \text{ Btu/h}^\circ\text{Fft}^2$   
 $U_g = 0,07 \text{ Btu/h}^\circ\text{Fft}^2$

